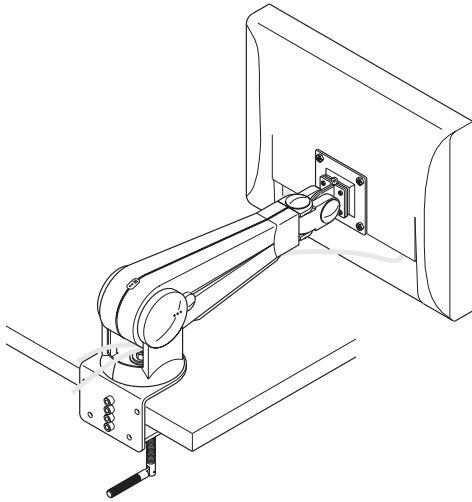


LCD Monitor Arm





Before starting Assembly

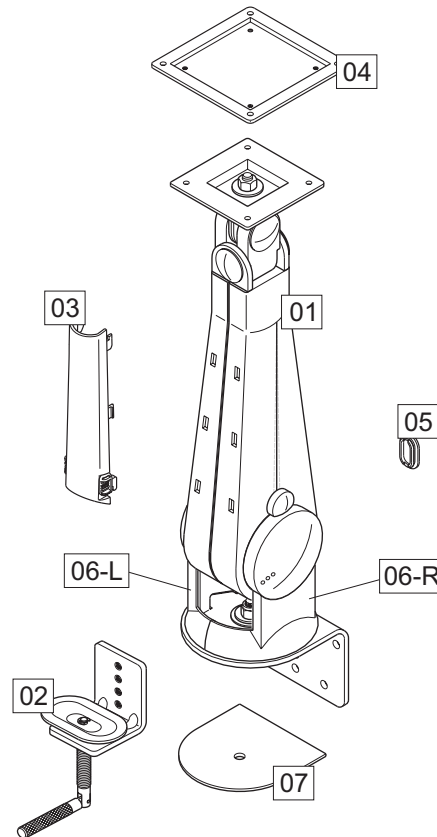
Please spend a short time reading this manual then follow the simple step by step guide to assembly. Some panels are viewed differently from the exploded drawing below, this is for extra clarity. Do not discard any of the packaging until you have checked all the parts and the pack of fittings. If you are missing any of the parts, contact store where you purchased.

Parts Check-List

Code	Component	Qty
01	Arm	1
02	Clamp	1
03	Cable Cover	1
04	Connector Plate	1
05	Rubber Cap	1
06	Base Cover	1pair
07	Clamp Pad	1

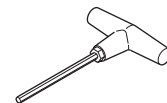
Fitting Check-List

Code	Description	Qty
08	Screw 	8
09	Bolt 	4



Tools Check-List

Allen Key

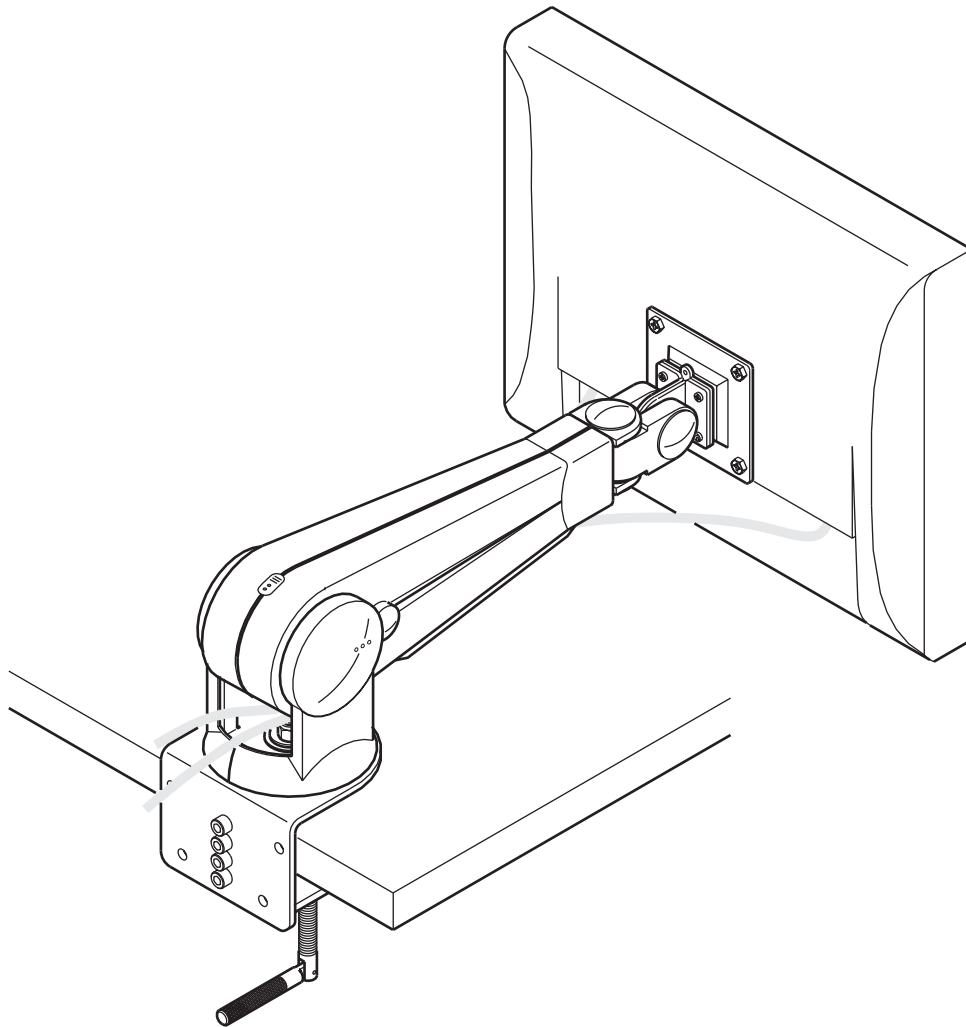


Caution:

Regular cleaning with a clean dry cloth is usually sufficient, but for stubborn marks, wipe over gently with a clean damp cloth. Never use strong detergents or abrasive cleaners as these may damage the surface finish of your furniture. There are many small components used in the construction of this unit. These loose items should be kept away from young children while assembling your unit.

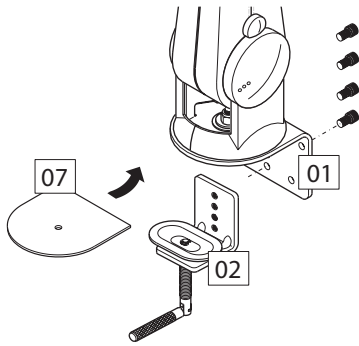
User's Manual

LCD Monitor Arms AFC01 & AFC02



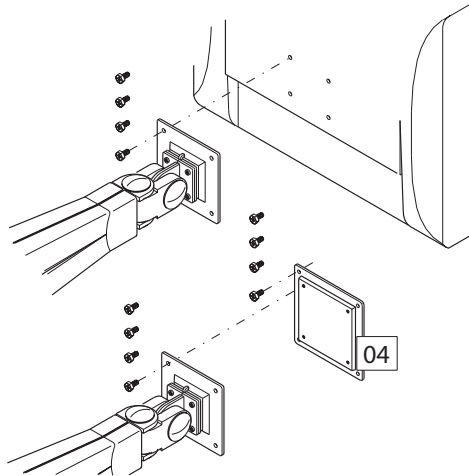
www.afcindustries.com • 1.800.663.3412

Assembly Guide



09  x4

Clamping system is well assembled in standard packing. However, user could disassemble this unit and re-assemble for thicker desk fitting by adjusting cranking bar & clamp position. At least two screws should be used for clamping system. Remove pad cover and adhere to bottom of larger L bracket. Suggested thickness of desk is 0.59"-3.94"

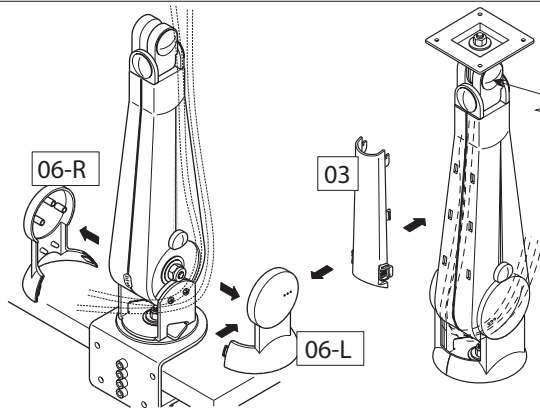


08  x8

Check your LCD panel first to find which VESA standard interface it supports before assembling.

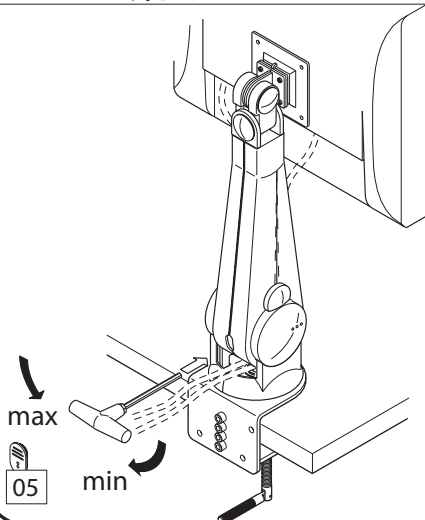
75 mm x 75 mm VESA standard interface
Secure the arm to the rear of the LCD panel with screws 08

100 mm x 100 mm VESA standard interface
Secure 100 x 100 mm plate 04 to the arm with screws 08, then secure the arm to the rear



The loading weight of universal joint is initially fixed below 13.23 lbs. Consult the store where you purchased about adjusting weight over 13.23 lbs.

Press two sides of 06-L lightly and remove 06-R, 06-L outwards. Let the cables run through the bottom of the arm and then press cable cover 03 to the arm to fix cables steady. Assemble 06-L and 06-R back to arm after finish cable managing.



Remove the rubber cap 05, use the Allen key provided to adjust the weight capacity from 6.61 lbs to 17.64 lbs. The weight is originally set up at 6.61 lbs.

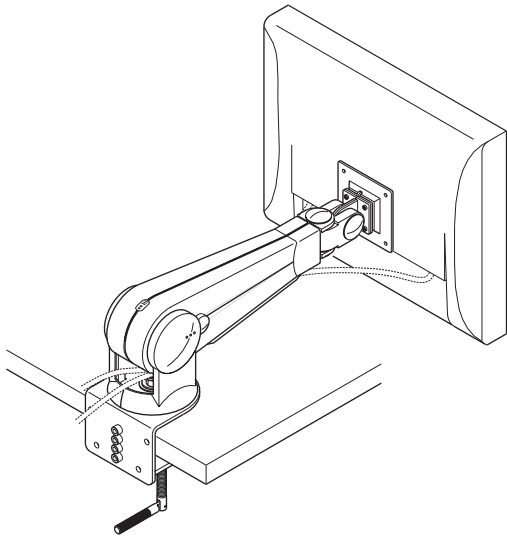
ADJUSTMENT:

Be sure to adjust the weight in a vertical position as illustrated. Twist the Allen key in a clockwise direction for less weight; counterclockwise direction, more weight. Make sure of the LCD panel weight prior to adjusting the weight according to the instruction.

Panel weight
8.82 lbs
11.02-13.23 lbs
15.43-17.64 lbs

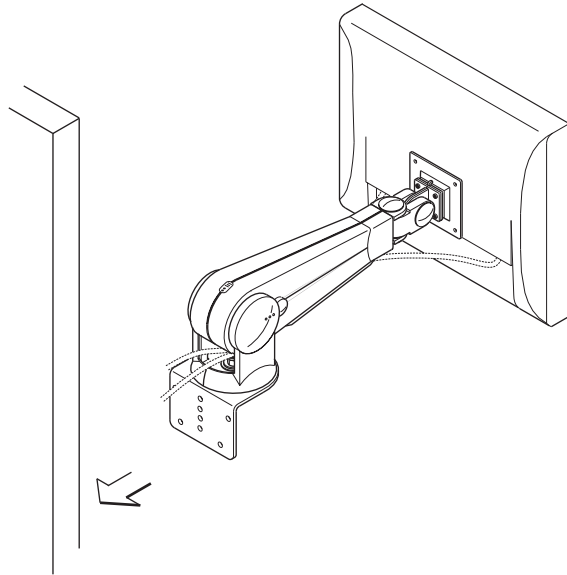
Counterclockwise direction
4 turns
5-7 turns
8-10 turns

A. Standard Befestigungs System



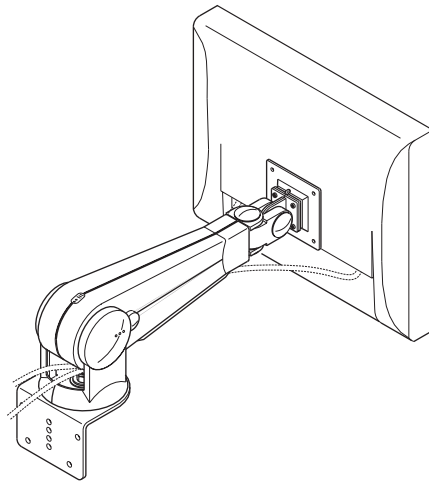
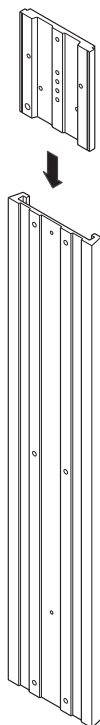
Clamp to the desk with at least 2 screws. For desks 0.59" - 4.02" thick, over 1.18" is suggested.

B. Mounting on wall (optional)



Before assembling the arm to the wall, make sure to remove the desktop clamp first. Hardware(screws) is not included.

C. Track-set System (optional)

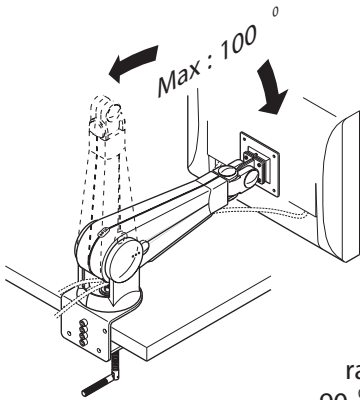


Before assembling the track to the arm, make sure to remove the desktop clamp first.

The maximum of track cycle is 23.62" , there are 24 stops. The pitch between two stops is 0.98" . Track is not included and if needed, contact the store from which you purchased your product.

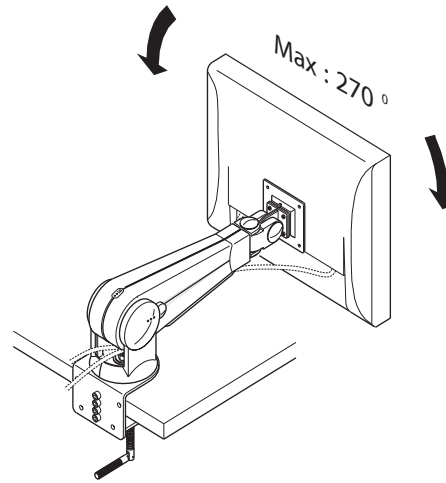
Net Weight: 18.74 lbs

Arm Operation



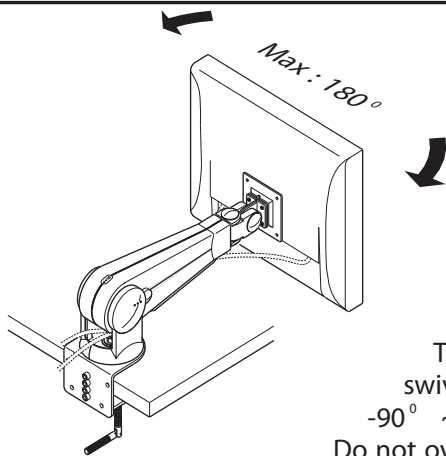
The vertical adjustment range is from -10° \sim 90° . Do not overwork, to avoid the damage of gas-spring system.
Guarantee:10000 turns.

Don't repeat the operation continuously more than 10 times .



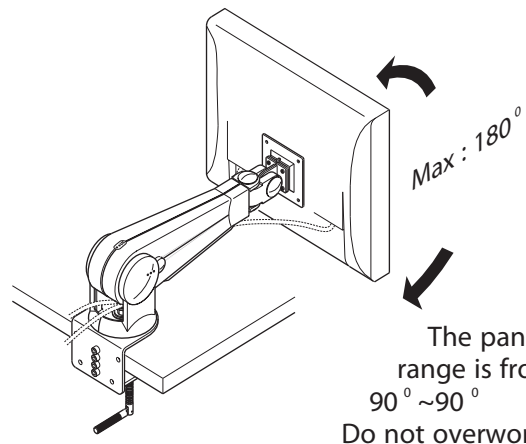
The panel rotation range is from -135° \sim 135° . Do not overwork to avoid the case to break.
Guarantee:6000 turns.

Don't repeat the operation continuously more than 10 times.



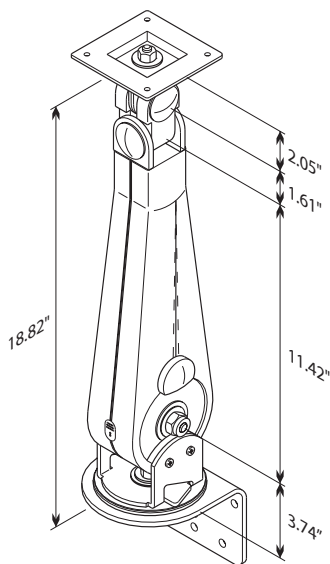
The panel swivels is from -90° \sim 90°
Do not overwork to

avoid the case to break.
Guarantee:6000 turns .
Don't repeat the operation continuously more than 10 times .

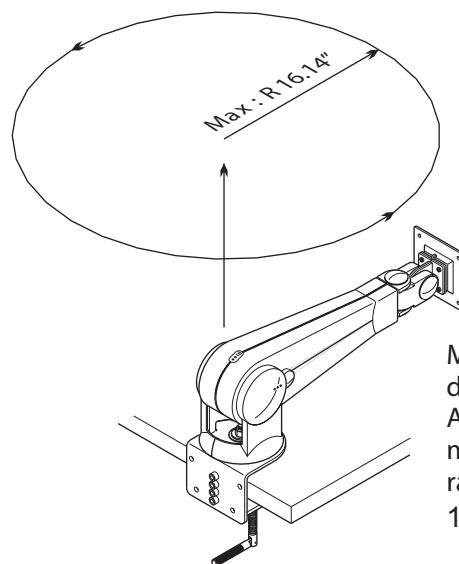


The panel tilt range is from -90° \sim 90°
Do not overwork to

avoid the case to break.
Guarantee:6000 turns .
Don't repeat the operation continuously more than 10 times .



Pitches between every two stops.



Movement distance of Arm: The maximum radius is 16.14"

11 Safty Notes:

1. Do not rotate the arm over the edge of desk to avoid the arm falls.(Fig.1)
2. Do not place the arm in a shaking environment .
3. Do not remove any part except handle, rubber cap and bolt as illustrated.(Fig.2)
4. Do not put your fingers in the space of knobs to avoid getting hurt.(Fig.3)
5. Please maintain all operation under room temperature.
6. Do not place the other stuffon the surface of the arm.
7. Do not place the panel weighted over 17.64 lbs.
8. Do not adjust the monitor with single hand. (Fig.4)
9. Be sure to secure the arm to the panel with 4 screws tightly. (Fig.5)
10. Be sure to adjust the arm in a vertical status after the job done to avoid the resiliency exhaustion of gas cylinder. (Fig.6)
11. Cable cover is restricted to hold two 0.31" &

