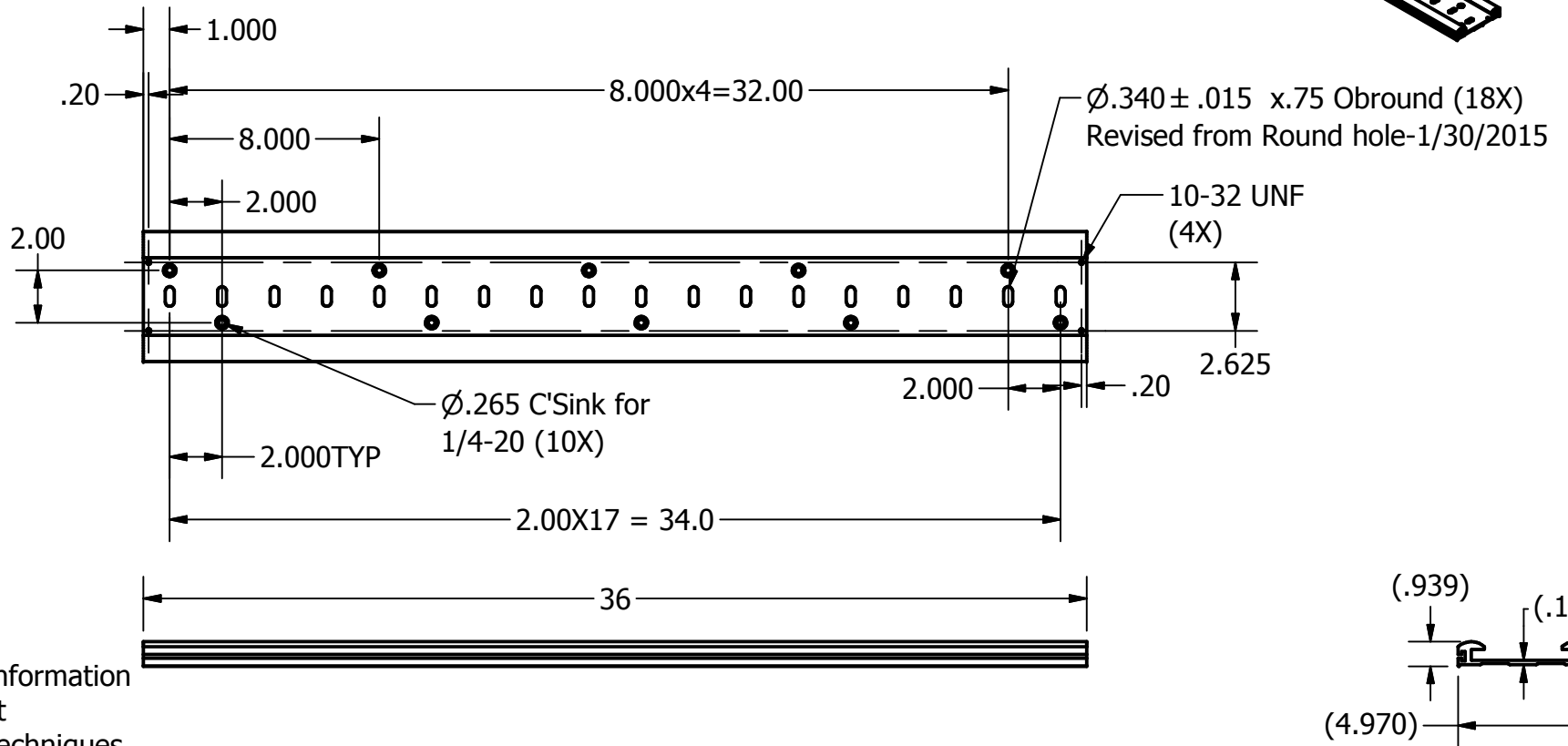
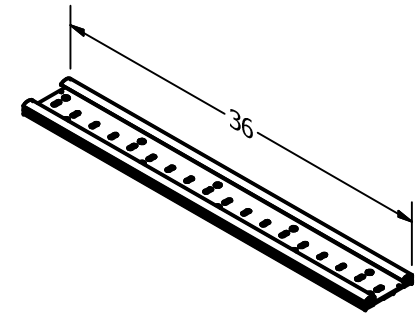


MS1259
MS1259

SO#:
QTY:



Please provide information on most efficient manufacturing techniques & operations to Engineering

WM-TRK-36-PL

<p>NOTES:</p> <p>Tolerances: x \pm 1/16 .xx \pm .05 .xxx \pm .030</p>	<p>MATERIAL: Aluminum-6061 AFC WM Track Stock</p> <p>SHEET 1 OF 1 SCALE:</p>	<p>DRAWN BY: SN</p>	<p>DATE: 4/4/2014</p>	<p>DESCRIPTION: Wall Mount Track for Plunger</p>	
		<p>A P P R O V E D :</p>			<p>PART: WM-TRK-36-PL</p>
		<p>ENG:</p>	<p>PATH: L:\PP&T-DWG\1 INVENTOR CONTENT CENTER\Library\Machined\WM Track\WM-TRK-36-PL\WM-TRK-36-PL.idw</p>		
		<p>MFG:</p>	<p>QA:</p>		